

Rozelle Rustlings

<https://rozelle-p.schools.nsw.gov.au/>

663 Darling Street, Rozelle
PO Box 300, Rozelle NSW 2039

tel: 02. 9810 2347

fax: 02. 9555 8715

rozelle-p.school@det.nsw.edu.au



Week 1 Term 3 24 July, 2020

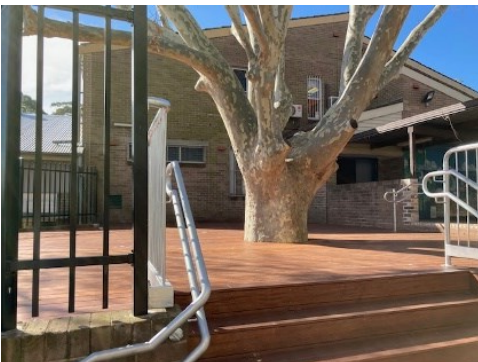
Welcome back to all our families to what we know will be a great term of learning at school. The school holidays were timely in providing a much needed break for students, staff and our school community. We are feeling rested and we are all looking forward to Term 3. We extend a warm welcome to the new families that have joined Rozelle this term. We know your school experiences will be positive and you will make many life long friends at our school. It was also a very valuable time as our playground work was completed over the break and the upgraded spaces are now ready for our students to enjoy.

Student responses and observations on the new playground spaces.

" The new upgrades in the woodlands, such as the shredded bark is great because its less painful when you fall down and there's more equipment to play on. The new equipment makes the playground look better and makes it more fun to play there." Felix Leesha



" The Year 6 area has improved in lots of ways. The school has created a quiet and safe place for Year 6 students to go during lunch and recess. I cant wait until next year when I can chill out in there. " Lucy Jackson



" I think that the woodland benches look more natural with the gravel stones and plants surrounding them. The new bark is of a much higher quality. It is spongy but durable." Isla Drake

" I love the new Year 6 area upgrades! The space went from an unused area to a usable and safe environment. I am so grateful to be able to use this space during my last year at this school! " Annika Lo

" The Year 6 area is a great space to spend your play time either chatting with friends or other activities like quietly reading a book whilst eating your lunch. This area is a nice place to get some peace and quiet away from the rest of the school. We feel grateful to have this space that not many schools have." Archie Eyiam Rowe, Year 6 Maple



ARRIVAL AND DISMISSAL PROCEDURES FOR TERM 3

Thank you to all members of our school community for your ongoing flexibility and help with adult social distancing during this time. We very much appreciate it. Our current systems are working extremely well, with our staggered arrival and dismissal times so we will continue the following arrangements in Term 3.

STAGGERED ARRIVAL AND DISMISSAL ARRANGEMENTS

Preschool arrival will be from 9am via Wellington Street.

Students in Years 3 – 6 will arrive via Darling Street and be sent to their normal classroom by the teacher on morning duty at 8.45am. K – 2 students' arrival via Darling Street playground will be between 8.45am and 9am. Teachers will collect students from the asphalt.

Parents are asked to continue to physically socially distance and to 'drop and go'.

DISMISSAL

Preschool dismissal from 2.45pm via Wellington Street.

K – 2 dismissal via Darling Street playground at 2.50pm. Years 3 -6 dismissal via Darling street playground at 3pm.

Students attending OSH Club will meet OSH staff at the flagpole.

SCHOOL ATTENDANCE as per DoE Advice

We would like to remind parents and carers not to send students to school if they are unwell, even if they have mild symptoms. We will make contact with families and arrange for students to go home if they become unwell at school.

Students should be at school unless:

- they have a medical certificate which states that they are unable to return to school due to an ongoing medical condition and the expected timeframe
- they are currently unwell

SCHOOL ACTIVITIES and SCHOOL SITE USAGE as per DoE Advice

The majority of school-based activities can recommence, as long as the following measures are observed:

- all visitors and external to school providers must adhere to relevant hygiene, distancing and safety protocols
- principals may continue to restrict, limit or prohibit activities if they are seen as contrary to the current health advice
- external providers and visitors are required to demonstrate compliance with health and safety requirements including adhering to strict guidelines and completing relevant forms
- non-essential adults are still not permitted on school grounds or at school events – this **includes parents/carers** unless specifically approved by the Principal.

PHYSICAL DISTANCING as per DoE Advice

Physical distancing of children in schools is not required under the AHPPC guidelines.

All adults must maintain physical distance from each other (1.5m) including teachers and support staff, and parents. Parents should ensure school pick up and drop off arrangements enable them to physically distance from one another and from staff.

Parents can access advice and updates on the website;

<https://education.nsw.gov.au/covid-19/advice-for-families>

SEMESTER ONE REPORTS

Rozelle Public School reports a summary of student progress with written reports twice a year and provides ongoing detail through interviews or meetings. In line with advice from the NSW Department of Education, this year our Semester One report has been adjusted in recognition of the impact of learning from home and describes student's progress and achievement in English and Mathematics, and identifies students' next steps in learning. Our reports will be sent home next week on Friday 31 July. Parents are welcome to contact the school if you wish to discuss your child's report and progress with the classroom or support teacher.

EDUCATION WEEK 2020

Education Week 2020 will run from Monday 3rd August to Friday 7th August and is a time where our school community can showcase the amazing talents of students at Rozelle. This year Education Week, will be a little different to previous years, as we are unable to have the community visit our school in person. Instead, each class will be providing a virtual classroom experience to show all the work that has been done over the year. In Week 3, each teacher will provide a short video or slideshow highlighting key achievements for their students over the year. The key message for this year is **Learning Together** as we all worked through home learning and onsite learning to provide continuity of learning for all students.

Key messages we have learnt together this year are:

- ◇ Schools and families benefit from strong, respectful relationships where responsibility for student learning is shared.
- ◇ We are all capable of change through resilience. As teachers, students and families learning together this makes us strong and creates resilient communities.
- ◇ All staff at Rozelle PS are dedicated professionals who know, value and care for all students. Teachers have learnt new ways of connecting with students through technology that enables learning together anywhere, anytime.

AN UPDATE FROM SCHOOL FOR LIFE IN UGANDA – OUR SISTER-SCHOOL PROJECT

When Uganda went into lockdown in March in response to the COVID-19 restrictions, this triggered some pressing challenges for School for Life's students as online learning is not an option for most children there. Through our school partnership, Rozelle Public School has provided support when it mattered most to ensure that students could still learn and thrive during these unprecedented times.

Vulnerable families in Ugandan school communities are now receiving monthly emergency food supplies, including soap and toilet paper, which are packed by staff from the school and the primary school teachers are hand-delivering weekly home-learning materials to students on motorbikes so they don't fall behind with their education. Teachers are also busy organising one-on-one check-ins for those families experiencing severe isolation, anxiety and poverty, with teachers expanding their roles to provide psycho-social support to students and their families.



ACTIVITIES AND EVENTS TO RECOMMENCE IN TERM 3

We are excited to announce that due to changes in the departmental safety guidelines that the following activities are able to recommence again this term. Most activities have commenced this week except for those activities that are scheduled for a Monday due to staff development day.

Rozelle Public School Activities from Term 3

<u>Day</u>	<u>Time</u>	<u>Activity</u>	<u>Teacher</u>	<u>Area</u>
Monday	8.15 –9am	Stage 3 Choir	Ms Jessop and Ms Doyle	Gallery Space
	11.35am	Stage 2 Debating	Ms Parsons	Ms Parsons Classroom
Tuesday	8-8.45am	Tennis K - 6	Leichhardt Tennis Academy leichhardttennisacademy@gmail.com	Tiger Turf/ Basketball Court
	11.10am	Stage 2 Dance	Ms Hansen	Hall
	11.10am	K – 3 Lego Club	Mrs Punch and Ms Horton	Flexible Kindy Space
Wednesday	8am	String Ensemble K - 6	Emma Greenhill emma_greenhill@hotmail.com	Gallery Space
	8am	Chess Y1 - 6	Sydney Academy of Chess	Library
	11.10am	Stage 2 Choir	Ms Roberts and Ms Goode	Hall
	11.10am	Stage 1 Choir	Ms Christie and Ms Agersnap	Ms Agersnap Classroom
	11.10am	Stage 3 Theatre Sports	Ms Rolland and Ms Genion	Gallery Space
Thursday	8.15am	Stage 3 Debating	Mr Kwok and Ms Dunn	Mr Kwok Classroom
	11.10am	Green Team	Ms Devitt	Outside Ms Devitt's Classroom
	11.10am	Learning Support Meeting	Mrs Howlett, Mrs Horton, Ms Lau	AP Office
	11.10am	Stage 3 Dance	Mr Hoadley	Hall
Friday	8am	String Ensemble	Emma Greenhill	Gallery Space
Every Day	8am	Band	Coordinator Amanda.palfreyman@det.nsw.edu.au	Music Room/Hall
Every Day	8.15am	Ukulele Y1 -6	Julia and Holly ukuleleclasses@gmail.com	Block C
	11.10am	Stage 3 Dance	Mr Hoadley	Hall
Monday, Tuesday and Friday	Various times	Keyboard K - 6	Urszula : vipmusic@iinet.net.au	Ms Hansen Classroom, Ms Christie Classroom, Ms Howlett Room

SCHOOL ASSEMBLIES

We have been given the option of commencing our school assemblies, however, they are only to be 15 minutes in duration. In light of this advice, as we are a large school and we value the engagement of all students and our whole school community when participating in these whole school events we have decided to wait until further advice is provided.

INFORMATION ON PAYMENTS and INVOICES FOR PARENTS

Parents can find a guide on how to make on line payments easier.

Angela Svinos Acting Principal

BAND NEWS

Following is some information and key dates for Term 3.

TUTOR LESSONS / SCHEDULE CHANGES

Tutor lessons have started back at school. If you are unsure of your child's lesson time, or need to re-schedule it, please let Amanda Palfreyman know and she will arrange.

BAND REHEARSAL

Rehearsal will continue to start from 7:45am in the hall.

Monday - Junior Band

Tuesday - Advanced Band

Wednesday - NO BAND REHEARSAL

Thursday - Intermediate Band

Friday - Senior Band

If your child has just started learning an instrument, they will be part of our 2020 Training Band. **The rehearsal for the Training Band will start later in Term 3, on a Wednesday morning** - more details to follow.

BAND ADMINISTRATION

If you are not receiving the weekly band email, please contact Amanda (amanda.palfreyman@det.nsw.edu.au) with your current email address.

STAGE 1: (K-2) PERCUSSION GROUP

Our Stage 1 Percussion Group for children in Years K-2 will start back this term during Wednesday lunchtime. The group is for students from Kindy to Year 2 and is led by our experienced Tutor, Bruce Stephens.

Bruce uses the standard music notation to teach basic composition, using a range of percussion instruments involving a mix of drums, chimes, sticks and boom whackers.

The intention of the class is for the children to have fun and enjoy making music within a group. It also helps prepare them to play later in the school band.

Why Chess?

- Create Brighter Thinkers
- Improve Student Focus
- Achieve Academic Success

**Combines
learning
with fun!**



Educational Benefits:

- Improves concentration and focus
- Develops logical thinking and problem solving skills
- Enhances memory
- Encourages creative and lateral thinking
- Promotes discipline
- Accelerates emotional development
- Expands visualisation and spatial awareness
- Demonstrates actions and consequences
- Rewards correct decision making
- Increases self-confidence
- Provides opportunities to make new friends from diverse backgrounds

Rozelle Public School Chess Classes, 2020 Wednesdays 8:00AM - 9:00AM in the Library

Term 1	Cost: \$94.50	12th Feb - 8th Apr
Term 2	Cost: \$105	29th Apr - 1st Jul
Term 3	Cost: \$105	22nd Jul - 23rd Sep
Term 4	Cost: \$94.50	14th Oct - 9th Dec

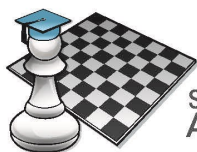
To enrol please pay online with your credit card at
www.sydneyacademyofchess.com.au/payment

Enter the code **DOSO1SMPQV** and fill in the electronic form, with your child's details.

**Fees are due on the first day of term. A late fee of \$10 will be applied if payment is not received within 4 weeks of the start of the term. No refunds or credits for missed lessons during the term and trial lessons must be paid for. For pro-rata fees (ie. starting part way during the term) please contact Sydney Academy of Chess on 9745 1170.*

OPTIONAL EXTRAS (prices include delivery)			
To enhance your child's learning experience these items are available for purchase online at the time of enrolment			
Workbook 1 – Cost: \$31 [For Beginner/Rookie Players]	Workbook 2 – Cost: \$31 [For Intermediate Players]	Workbook 1 & 2 – Cost: \$46 [SPECIAL OFFER]	
Exploration in Chess Beauty – Cost: \$42 [For Advanced Players]	Chess Set & Roll-up Board – Cost: \$34 [Recommended for All Ages]	Chess Clock – Cost: \$77 [Recommended for All Ages]	

Pay for four terms in advance and receive a **free chess set or workbook 2** valued at up to \$34. Offer expires 31st March, 2020.



**SYDNEY
ACADEMY OF CHESS**

P: 9745 1170 F: 9745 1176 E: enrolment@sydneyacademyofchess.com.au

Sydney Academy of Chess Pty Ltd

ABN: 14 139 982 004

Level 1, 30A George Street Burwood, NSW

PO Box 1325, Burwood, NSW 1805

Learn Music on Keyboard at School Term 3 Enrolment

*Great songs! Musical activities!
Cool music knowledge!*



- Convenient at-school venue with additional health & safety measures in place
- Small group, 45 min weekly lesson
- Competitive rate
- Instrument not required initially
- Fun introduction to music



**To enrol: www.learnmusicatschool.com.au
(02) 9411 3122**

VIP Music est. 1984